



GAT MONTHLY MEMBERSHIP PROGRESS REPORT

Results as of: 3/31/2024

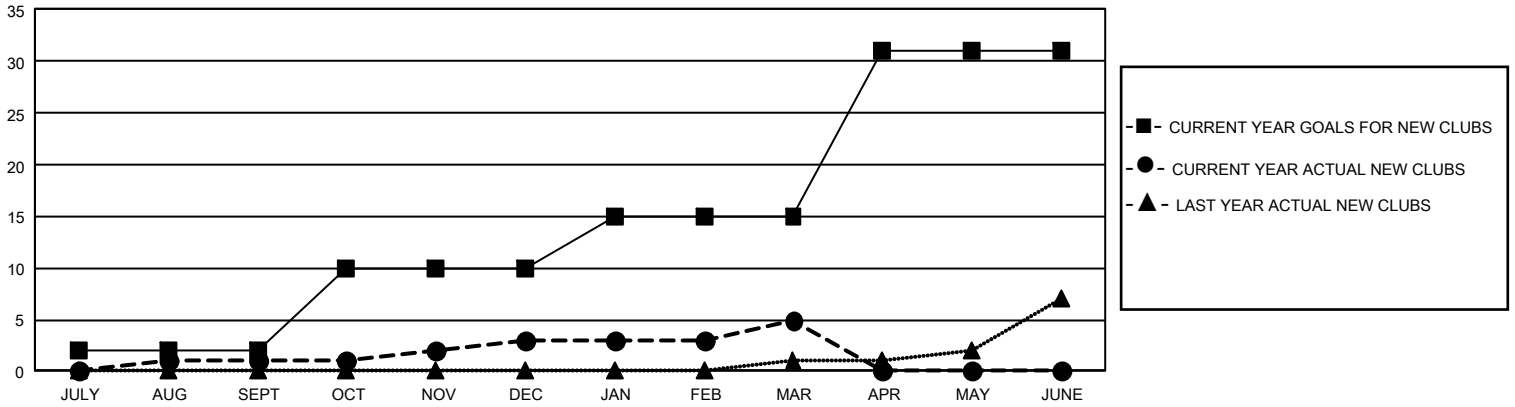
GMT Constitutional Area 1, Group C

REPORT DOES NOT INCLUDE CLUBS IN UNDISTRICTED AREAS.

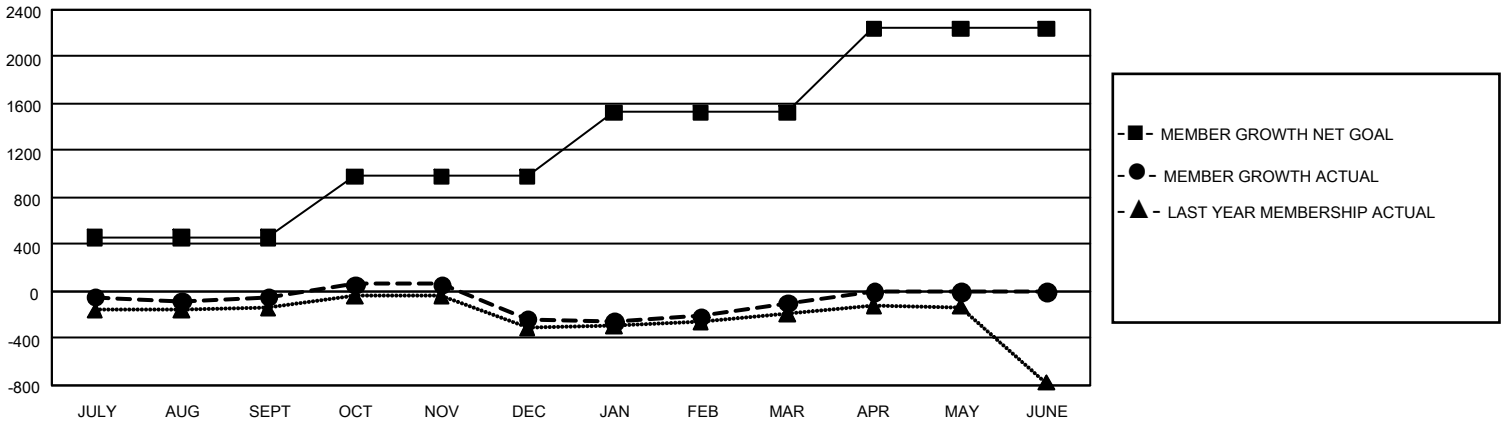
Clubs			
RESULTS FOR 2023-2024			
QUARTER	NEW CLUB GOAL	NEW CLUBS	DROPPED CLUBS
JULY/AUG/SEPT	6	1	4
OCT/NOV/DEC	24	2	3
JAN/FEB/MAR	15	2	1
APR/MAY/JUNE	48	0	0

Members			
RESULTS FOR 2023-2024			
QUARTER	MEMBER GROWTH NET GOAL	MEMBER GROWTH ACTUAL	DROPPED MEMBERS ACTUAL (including transfers)
JULY/AUG/SEPT	455	1,033	987
OCT/NOV/DEC	525	984	1,090
JAN/FEB/MAR	543	1,023	820
APR/MAY/JUNE	719	0	0

GOALS AND ACTUAL NEW CLUBS CUMULATIVE



GOALS AND ACTUAL MEMBERS CUMULATIVE



DROPPED CLUBS: 8	854 CLUBS OF 1,404 ADDED 1 OR MORE NEW MEMBERS	GENDER DISTRIBUTION	
		MALE 29,352 (68.64%) FEMALE 13,398 (31.33%) NON BINARY 2 (0.00%) PREFER NOT TO ANSWER 13 (0.03%)	
DROPPED MEMBERS		CLICK HERE FOR CUMULATIVE MEMBERSHIP DATA	
DECEASED 491 CLUB CANCELLED 28 OTHER 2,378 TOTAL 2,897	TOTAL FAMILY UNIT MEMBERS 8,774 FAMILY MEMBERS PAYING HALF DUES 4,453		